






# OTHER DATA MODULES

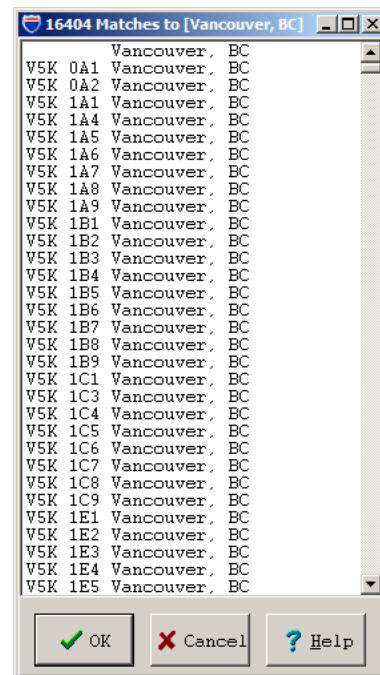
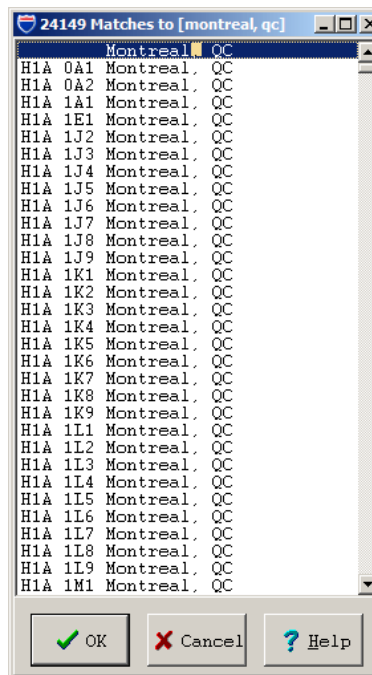
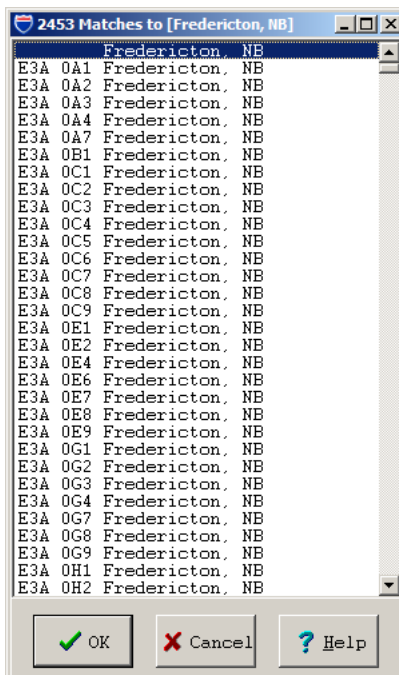
TECHNOLOGY THAT DRIVES TRANSPORTATION™

This document includes information on the following Data Modules:

-  Canadian Postal Codes
-  Standard Point Location Codes (SPLC)
-  infoUSA® Points of Interest

## CANADIAN POSTAL CODES

By purchasing the Canadian Postal Code Add-On Data Module, over 811,400 six-digit Canadian Postal Codes are added into the database. Users can search and display corresponding city/province names to enter them as stops along a route. As an example, when searching on Fredericton, NB over 2,400 postal codes are available, in Montreal, QC over 24,100 postal codes are available, and in Vancouver, BC over 16,400 postal codes are available.



### System Requirements:

**Requirements:** 50 MB of hard disk space, 512 MB RAM

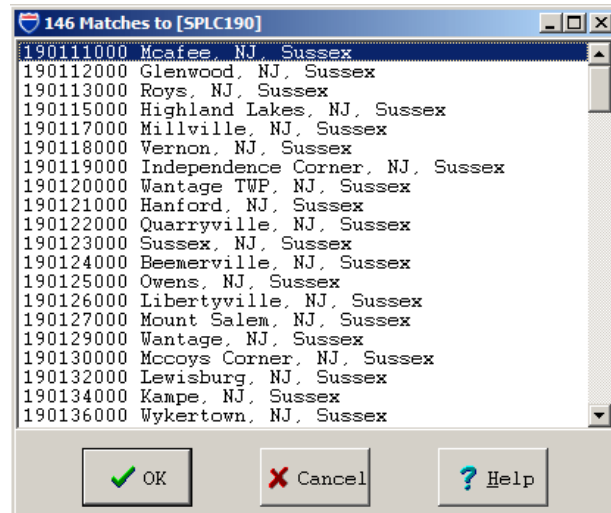
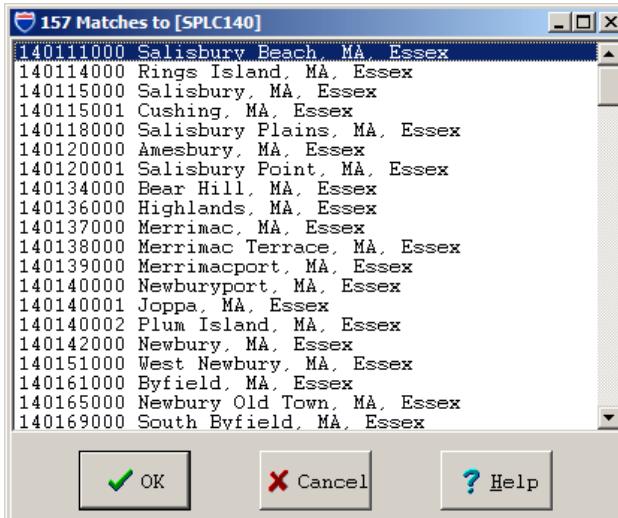
**Platforms:** PC/LAN Windows® (2000, 2003, Vista, XP, includes 64-bit support), Linux, UNIX (AIX, HP-UX, SCO, Sun-Solaris), AS/400, CICS/MVS

**Products:** PC\*MILER, PC\*MILER|Worldwide, PC\*MILER Web Services, ALK|FleetSuite

## STANDARD POINT LOCATION CODES

By purchasing the Standard Point Location Codes (SPLC) Add-On Data Module, 112,700 SPLC are added into the database to generate routes for rating and freight bill auditing.

A SPLC is designed to provide each point originating freight and each point receiving freight in North America with a unique code number to identify the point with its geographic location. SPLC is based a system of nesting recognized political entities and numbering them in a standard geographic pattern. The nesting system is State-County-City-Sub-Code and is identified by a nine-digit number. (e.g. 140111000 or 190314000)



### System Requirements:

**Requirements:** 2 MB of hard disk space, 512 MB RAM

**Platforms:** PC/LAN Windows (2000, 2003, Vista, XP, includes 64-bit support), Linux, UNIX (AIX, HP-UX, SCO, Sun-Solaris), AS/400

**Products:** PC\*MILER, PC\*MILER|Worldwide, PC\*MILER Web Services, ALK|FleetSuite

**NOTE:** SPLC data is owned, maintained and copyrighted by the National Motor Freight Traffic Association, Inc.

## INFOUSA POINTS OF INTEREST

Over 9.5 million infoUSA Points of Interest (POI) from infoUSA's U.S. business database are added into the database to search, display and route to for FREE. Locations are categorized and identified on the map by the categories listed below. These locations can be located directly on the map, or searched on through the Location Radius feature.



Airport (Major and Minor)



Automotive & Maintenance



Border Crossing



Gas Stations



Government



Lodging



infoUSA is the leading provider of proprietary business and consumer databases, sales leads, direct marketing, and email marketing. This Add-On Module provides users the ability to access information on millions of POI locations including restaurants, hotels, gas stations, shopping facilities, and entertainment facilities to name a few. infoUSA's verification processes ensures that their business listings contain the most current and accurate information available.

### System Requirements:

- Requirements:** 512 MB RAM  
1.9 GB hard disk space
- Platforms:** PC/LAN Windows (2000, 2003, Vista, XP, includes 64-bit support), Linux, UNIX (AIX, HP-UX, SCO, Sun-Solaris), AS/400
- Products:** PC\*MILER, PC\*MILER|Worldwide, PC\*MILER Web Services, ALK|FleetSuite

**NOTE:** infoUSA POIs are owned, maintained and copyrighted by the infoUSA.